

S-30-S



S-30 S

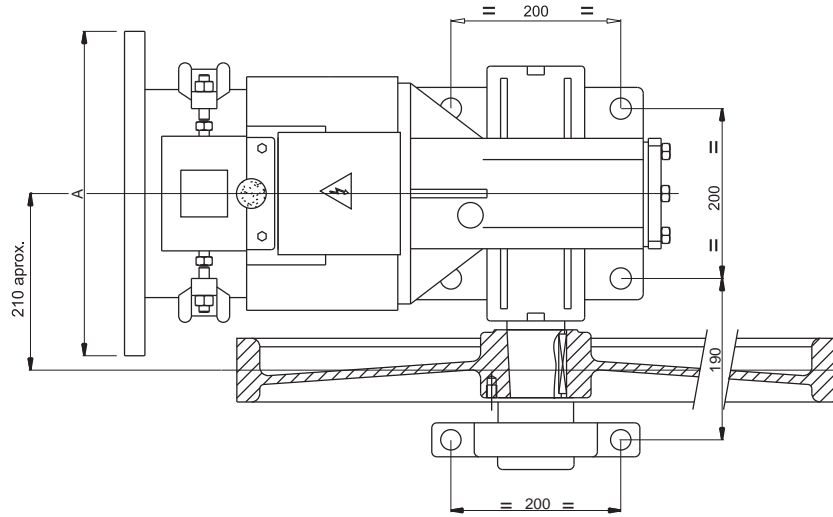


S-30 S

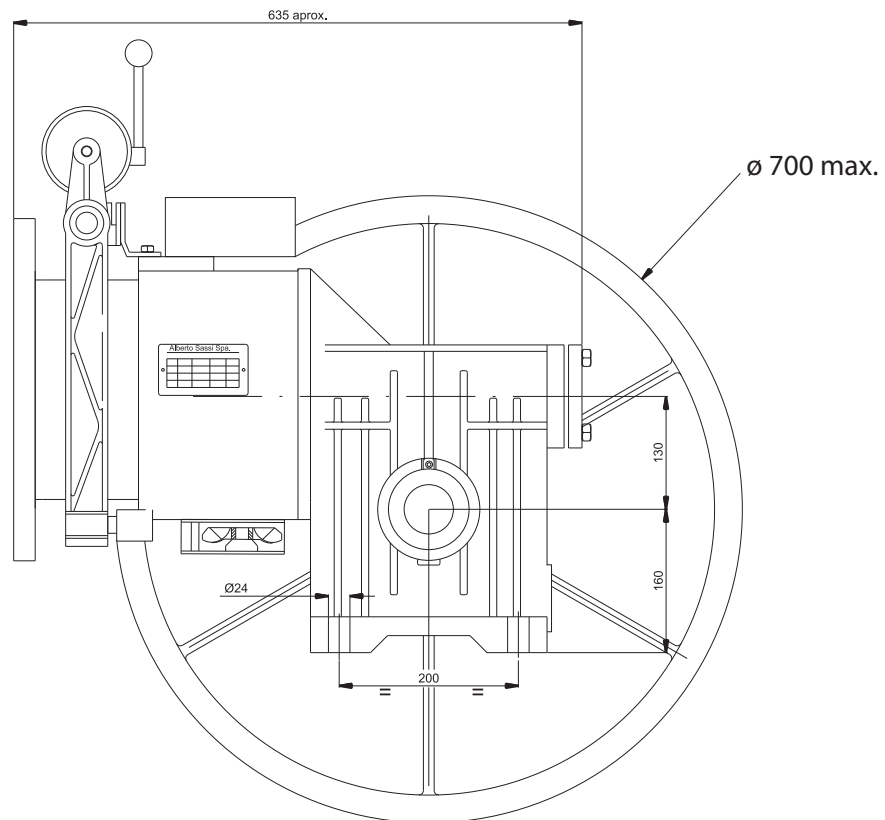
| DATOS | DATI | DATA | ANGABE | DONNÉES | |
|-----------------------------------|-----------------------------|------------------------------|-----------------------------------|-------------------------------|------------------------|
| Máx. carga estática | Carico statico max | Max. static load | Statische Höchstlast | Charge statique maxi | kg 2300 |
| Reducciones | Rapporti | Ratios | Übersetzungen | Rapports | 1/45 1/55 1/71 2/57 |
| Escala potencias con 4/16 polos | Gamma potenze a 4/16 poli | Powers range at 4/16 poles | Leistungsbereich für 4/16 Polen | Gamme puissances 4/16 pôles | 3.5 → 5.5 kW SYNC |
| Escala potencias con 6/24 polos | Gamma potenze a 6/24 poli | Powers range at 6/24 poles | Leistungsbereich 6/24 Polen | Gamme puissances 6/24 pôles | 2.9 → 3.3 kW SYNC |
| Escala potencias VVVF con 4 polos | Gamma potenze VVVF a 4 poli | Powers range VVVF at 4 poles | Leistungsbereich VVVF für 4 Polen | Gamme puissances VVVF 4 pôles | 3.3 → 7.3 kW SYNC |
| Momento de inercia J | Momento d'inercia J | Moment of inertia J | Tragheitsmoment J | Momente d'inertie J | kgm ² 0.010 |
| Capacidad aceite | Capacità olio | Oil capacity | Ölmenge | Capacité huile | 2.5 ℓ |

| | TABLA DE PESOS Sin volante y polea | TABELLA DEI PESI Senza volano e puleggia | WEIGHT TABLE Without fly-wheel and sheave | GEWICHTSTABELLE Ohne Schwungscheibe und Tr-Kranz | TABELLE DES POIDS Sans volant et poulie |
|---|---------------------------------------|---|--|---|--|
| | 4/16 | kw 3.5 → 4.0 kg 190 | kw 4.9 | kg 195 | kw 5.5 kg 201 |
| Potencias motor Potenza motore | 6/24 | kw 2.9 → 3.3 kg 200 | | | |
| Power range Leistungsbereich Puissance moteur | VVVF | kw 3.3 → 5.9 kg 190 | kw 6.6 → 7.3 | kg 195 | |

S-30 S



S-30-S



| | | | | | | | | | | | | |
|-----------------------|---------|-----|-----|-----|---------|-----------------------|---------|-----|-----|-------------|---------|---------|
| 4/16 polos | KW SYNC | 3.5 | 4.0 | 4.9 | 5.5 | 6/24 polos | KW SYNC | 2.9 | 3.3 | VVVF | KW SYNC | 3.3/8.1 |
| | A | 382 | 382 | 382 | 382/400 | | A | 382 | 400 | | A | 350 |

S-30S

4/16 50 Hz

**1500 rpm
2300 kg**

| | | | | |
|-----------------------|-----------------------------------|--------------------|-------------------------------|-----------------------------------|
| Velocidad R.p.m. | Velocità Giri/min ¹ | Speed R.p.m. | Geschw. U/min ¹ | Vitesse Tours/min ¹ |
| Carga estática máx | Carico statico max | Max Static load | Max statische Achslast | Charge statique max |

Carga descompensada en kg con rendimiento del hueco = 0.8
 Differenza di tiro in kg con rendimento del vano = 0.8
 Out of balance load in kg with shaft efficiency = 0.8
 Zugkraefte in kg mit Schachtwirkungsgrad = 0.8
 Force de traction en kg avec rendement de la gaine = 0.8

| | | |
|--|---|---|
| VELOCIDAD VELOCITÀ SPEED GESCHW. VITESSE | REDUCCION. RAPPORTO RATIO ÜBERSETZ. RAPPORT | POLEA PULEGIA SHEAVE TREIBSCH. POULIE |
|--|---|---|

| kW SYNC | | | | | VELOCIDAD VELOCITÀ SPEED GESCHW. VITESSE | REDUCCION. RAPPORTO RATIO ÜBERSETZ. RAPPORT | POLEA PULEGIA SHEAVE TREIBSCH. POULIE |
|------------|-----|-----|-----|-----|--|---|---|
| | 3.5 | 4.0 | 4.9 | 5.5 | (m/sec) | | Ømm |
| 459 | | | | | 0.39 | 1/71 | 360 |
| 407 | | | | | 0.44 | 1/71 | 400 |
| 359 | 412 | 496 | | | 0.51 | 1/55 | 360 |
| 339 | | | | | 0.53 | 1/71 | 480 |
| 323 | 371 | 447 | | | 0.57 | 1/55 | 400 |
| 314 | | | | | 0.57 | 1/71 | 520 |
| 293 | | | | | 0.61 | 1/71 | 560 |
| 320 | 367 | 446 | 487 | | 0.62 | 1/45 | 360 |
| 271 | | | | | 0.66 | 1/71 | 600 |
| 270 | 309 | 373 | | | 0.68 | 1/55 | 480 |
| 287 | 329 | 401 | 440 | | 0.69 | 1/45 | 400 |
| 249 | 285 | 342 | | | 0.74 | 1/55 | 520 |
| 230 | | | | | 0.77 | 1/71 | 700 |
| 231 | 265 | 320 | | | 0.79 | 1/55 | 560 |
| 239 | 275 | 333 | 368 | | 0.83 | 1/45 | 480 |
| 216 | 247 | 300 | | | 0.85 | 1/55 | 600 |
| 220 | 252 | 308 | 337 | | 0.90 | 1/45 | 520 |
| 204 | 234 | 286 | 316 | | 0.97 | 1/45 | 560 |
| 219 | 251 | 307 | 343 | | 1.00 | 2/57 | 360 |
| 180 | 205 | 255 | | | 1.00 | 1/55 | 700 |
| 192 | 218 | 266 | 290 | | 1.04 | 1/45 | 600 |
| 196 | 226 | 276 | 310 | | 1.10 | 2/57 | 400 |
| 162 | 185 | 226 | 246 | | 1.22 | 1/45 | 700 |
| 165 | 188 | 229 | 258 | | 1.32 | 2/57 | 480 |
| 153 | 173 | 212 | 237 | | 1.43 | 2/57 | 520 |
| 140 | 162 | 196 | 222 | | 1.54 | 2/57 | 560 |
| 131 | 151 | 184 | 206 | | 1.65 | 2/57 | 600 |
| 110 | 128 | 156 | 176 | | 1.93 | 2/57 | 700 |

S-30S

VVVF 50 Hz

1500 rpm
2300 kg

| | | | | |
|-----------------------|-----------------------|--------------------|---------------------------|------------------------|
| Velocidad R.p.m. | Velocità Giri/min' | Speed R.p.m. | Geschw. U/min' | Vitesse Tours/min' |
| Carga estática máx | Carico statico max | Max Static load | Max statische Achslast | Charge statique max |

Carga descompensada en kg con rendimiento del hueco = 0.8
 Differenza di tiro in kg con rendimento del vano = 0.8
 Out of balance load in kg with shaft efficiency = 0.8
 Zugkraefte in kg mit Schachtwirkungsgrad = 0.8
 Force de traction en kg avec rendement de la gaine = 0.8

| | | |
|-----------|------------|-----------|
| VELOCIDAD | REDUCCION. | POLEA |
| VELOCITÀ | RAPPORTO | PULEGGIA |
| SPEED | RATIO | SHEAVE |
| GESCHW. | ÜBERSETZ. | TREIBSCH. |
| VITESSE | RAPPORT | POULIE |

kw
SYNC

| 3.3 | 3.7 | 4.0 | 4.8 | 5.5 | 5.9 | 6.2 | 6.6 | 7.3 | | | | |
|-----|-----|-----|-----|-----|-----|-----|-----|-----|--|---------|------|-----|
| | | | | | | | | | | (m/sec) | | Ømm |
| 475 | 516 | | | | | | | | | 0.39 | 1/71 | 360 |
| 421 | 455 | | | | | | | | | 0.44 | 1/71 | 400 |
| 374 | 415 | 456 | 541 | 557 | | | | | | 0.51 | 1/55 | 360 |
| 349 | 383 | | | | | | | | | 0.53 | 1/71 | 480 |
| 336 | 371 | 410 | 483 | 498 | | | | | | 0.57 | 1/55 | 400 |
| 325 | 355 | | | | | | | | | 0.57 | 1/71 | 520 |
| 305 | 333 | | | | | | | | | 0.61 | 1/71 | 560 |
| 331 | 368 | 405 | 478 | 534 | 544 | | | | | 0.62 | 1/45 | 360 |
| 281 | 305 | | | | | | | | | 0.66 | 1/71 | 600 |
| 281 | 313 | 344 | 405 | 416 | | | | | | 0.68 | 1/55 | 480 |
| 297 | 330 | 364 | 429 | 472 | 498 | | | | | 0.69 | 1/45 | 400 |
| 257 | 286 | 315 | 373 | 383 | | | | | | 0.74 | 1/55 | 520 |
| 238 | 260 | | | | | | | | | 0.77 | 1/71 | 700 |
| 242 | 271 | 297 | 350 | 361 | | | | | | 0.79 | 1/55 | 560 |
| 247 | 275 | 302 | 357 | 407 | 415 | | | | | 0.83 | 1/45 | 480 |
| 225 | 249 | 276 | 326 | 336 | | | | | | 0.85 | 1/55 | 600 |
| 228 | 253 | 279 | 330 | 375 | 384 | | | | | 0.90 | 1/45 | 520 |
| 212 | 235 | 260 | 305 | 348 | 357 | | | | | 0.97 | 1/45 | 560 |
| 227 | 252 | 276 | 328 | 376 | 404 | 428 | 453 | 479 | | 1.00 | 2/57 | 360 |
| 190 | 212 | 234 | 277 | 286 | | | | | | 1.00 | 1/55 | 700 |
| 197 | 219 | 241 | 285 | 327 | 334 | | | | | 1.04 | 1/45 | 600 |
| 204 | 227 | 249 | 294 | 340 | 363 | 385 | 408 | 431 | | 1.10 | 2/57 | 400 |
| 165 | 185 | 204 | 242 | 278 | 284 | | | | | 1.22 | 1/45 | 700 |
| 170 | 190 | 208 | 245 | 283 | 303 | 321 | 340 | 358 | | 1.32 | 2/57 | 480 |
| 157 | 175 | 192 | 227 | 261 | 278 | 297 | 314 | 332 | | 1.43 | 2/57 | 520 |
| 145 | 162 | 178 | 210 | 243 | 260 | 276 | 291 | 307 | | 1.54 | 2/57 | 560 |
| 136 | 151 | 167 | 197 | 227 | 242 | 258 | 272 | 286 | | 1.65 | 2/57 | 600 |
| 114 | 128 | 141 | 166 | 192 | 205 | 220 | 232 | 244 | | 1.93 | 2/57 | 700 |

- * SÓLO CON INVERTER DE LAZO CERRADO
- * SOLO CON INVERTER RETROAZIONATI
- * WITH INVERTERS WITH FEEDBACK ONLY
- * NUR MIT INVERTER MIT GEREGLTEM BETRIEB
- * SEULEMENT AVEC INVERTER VECTORIELLES



Pol. Industrial de Guarnizo, parcela 83A
39611 Guarnizo (Cantabria) - Spain

Phone +34 942 559 544

Fax +34 942 559 141

www.sassi-spain.com